

# SCREWED END 3 WAY REDUCED PORT BALL VALVE



## V-3WAY TYPE

SIZE: 1/4" ~ 2"



### STAINLESS STEEL

**AISI-316** (EN10213-4 1.4408) (ASTM-A351-CF8M)

**AISI-304** (EN10213-4 1.4308) (ASTM-A351-CF8)

### CARBON STEEL

**S-20C** (EN10213-2 1.0619) (ASTM-A216-WCB)

#### FEATURES:

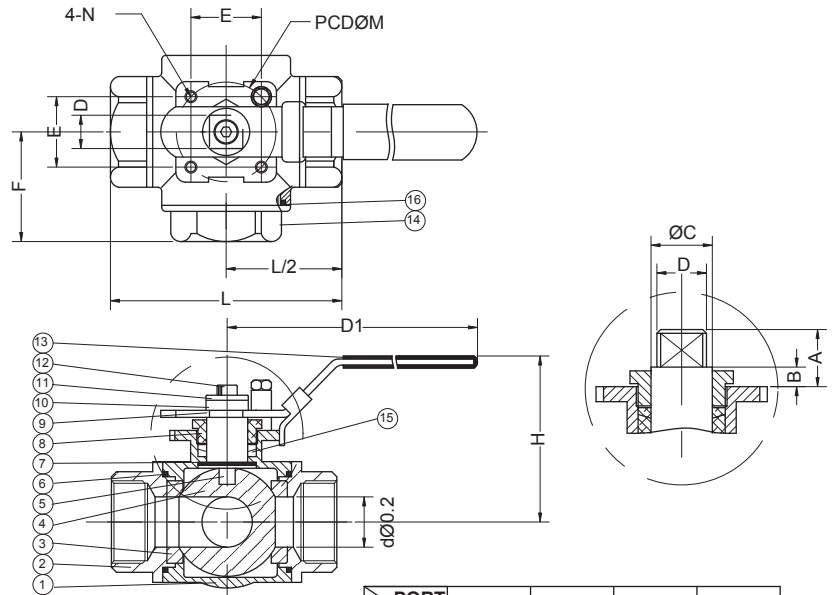
- \*Anti-static device
- \*Blow-out proof stem, Lever operated.
- \*1000 PSI (69 BAR) W.O.G.
- \*L port, T port

#### OPTION: Locking device

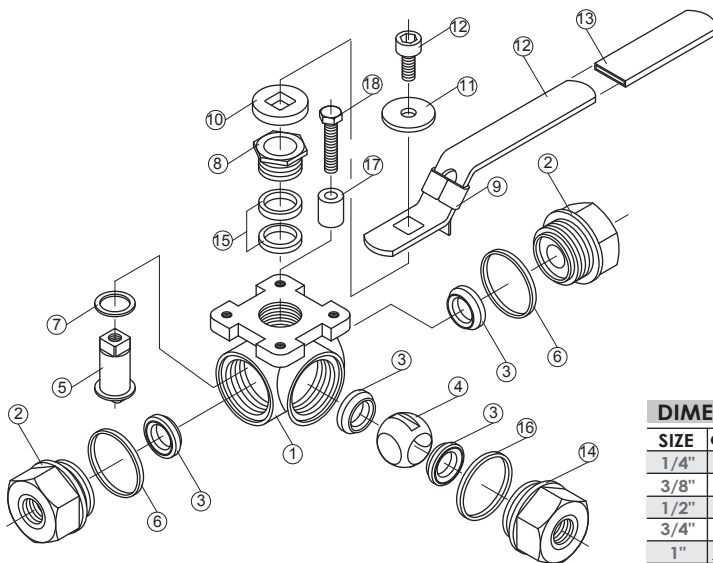
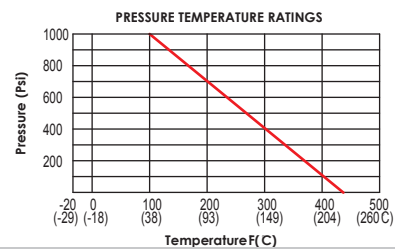
Direct Mounting Pad ISO 5211

Mounting pad for ISO 5211

| ITEM | PARTS         | MATERIALS         |
|------|---------------|-------------------|
| 1    | BODY          | ASTM A351 GR.CF8M |
| 2    | CAP           | ASTM A351 GR.CF8M |
| 3    | SEAT          | PTFE+15%G/F       |
| 4    | BALL          | ASTM A351 GR.CF8M |
| 5    | STEM          | S.S.316           |
| 6    | END SEALS     | PTFE              |
| 7    | THRUST WASHER | PTFE              |
| 8    | GLAND         | S.S.304           |
| 9    | HANDLE        | S.S.304           |
| 10   | HANDLE WASHER | S.S.304           |
| 11   | WASHER        | S.S.304           |
| 12   | HANDLE NUT    | S.S.304           |
| 13   | HANDLE SLEEVE | VINYL GRIP        |
| 14   | END CAP       | ASTM A351 GR.CF8M |
| 15   | STEM PACKINGS | PTFE              |
| 16   | END SEALS     | PTFE              |
| 17   | STOP PIN      | S.S.304           |
| 18   | BOLT          | S.S.304           |



| PORT TYPE | 1     | 2     | 3     | 4     |
|-----------|-------|-------|-------|-------|
| L         | 1/3 2 | 1/3 2 | 1/3 2 | 1/3 2 |
| T         | 1/3 2 | 1/3 2 | 1/3 2 | 1/3 2 |



| DIMENSIONS |       |       |       |        |      |      |      |    |      |       | UNIT:mm |         |     |
|------------|-------|-------|-------|--------|------|------|------|----|------|-------|---------|---------|-----|
| SIZE       | d±0.2 | L±0.8 | H±1.0 | D1±1.0 | A    | B    | C    | D  | E    | F     | M       | N       | Nm  |
| 1/4"       | 11.0  | 69.4  | 60.7  | 133.4  | 10.7 | 5.7  | 12   | 9  | 29.7 | 34.6  | 42      | M5*0.8  | 4.5 |
| 3/8"       | 11.0  | 69.4  | 60.7  | 133.4  | 10.7 | 5.7  | 12   | 9  | 29.7 | 34.6  | 42      | M5*0.8  | 4.5 |
| 1/2"       | 12.5  | 75.7  | 64.1  | 133.4  | 10.7 | 5.8  | 12   | 9  | 29.7 | 37.25 | 42      | M5*0.8  | 5.5 |
| 3/4"       | 16.0  | 86.6  | 82.4  | 178.5  | 13.9 | 6.9  | 15   | 11 | 35.4 | 44.7  | 50      | M6*1    | 9   |
| 1"         | 20.0  | 102.  | 86.1  | 178.5  | 20.0 | 8.5  | 15   | 11 | 35.4 | 51.4  | 50      | M6*1    | 11  |
| 1-1/4"     | 25.0  | 118.2 | 91.4  | 209.9  | 23.8 | 7.8  | 15   | 11 | 35.4 | 57.7  | 50      | M6*1    | 16  |
| 1-1/2"     | 32.0  | 125.8 | 102.7 | 208    | 25.8 | 10.2 | 15   | 11 | 49.5 | 62.7  | 70      | M8*1.25 | 22  |
| 2"         | 38.0  | 149   | 110.7 | 229.9  | 25.3 | 9.7  | 18.5 | 14 | 49.5 | 74.6  | 70      | M8*1.25 | 33  |
| 2 1/2"     | 50    | 160   | 132   | 265    | 24.5 | 8.5  | 18.5 | 14 | 49.5 | 80    | 70      | M8*1.25 | 40  |
| 3"         | 65    | 185   | 132   | 265    | 29   | 9.0  | 21.0 | 17 | 72.1 | 92.5  | 102     | M10*1.5 | 66  |