

V-3W TYPE

SIZE : 1/4" ~ 2"



STAINLESS STEEL

AISI-316 (EN10213-4 1.4408) (ASTM-A351-CF8M)

AISI-304 (EN10213-4 1.4308) (ASTM-A351-CF8)

CARBON STEEL

S-20C (EN10213-2 1.0619) (ASTM-A216-WCB)

FEATURES:

*Pipe thread in accordance with ANSI B2.1, BS21 1973, DIN259/2999, ISO 228

*Blow-out proof stem

*Investment casting body and cap

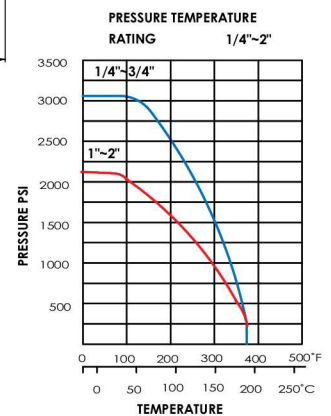
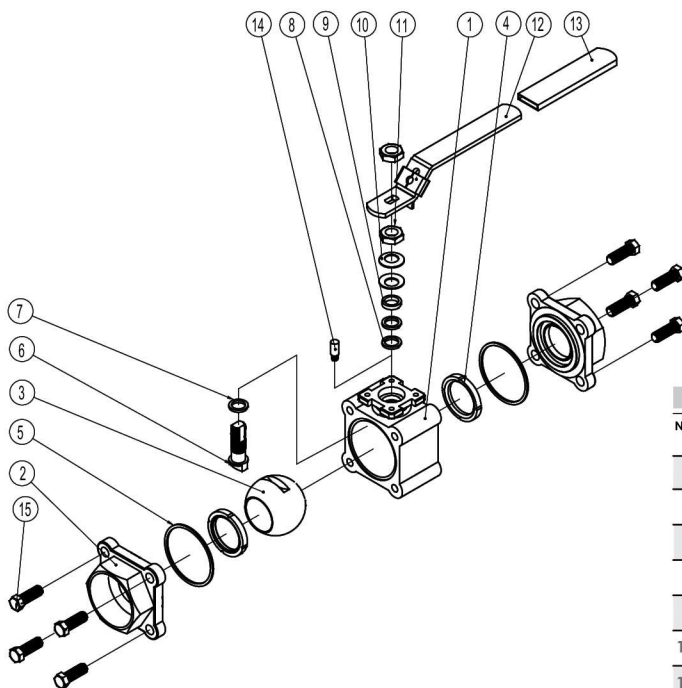
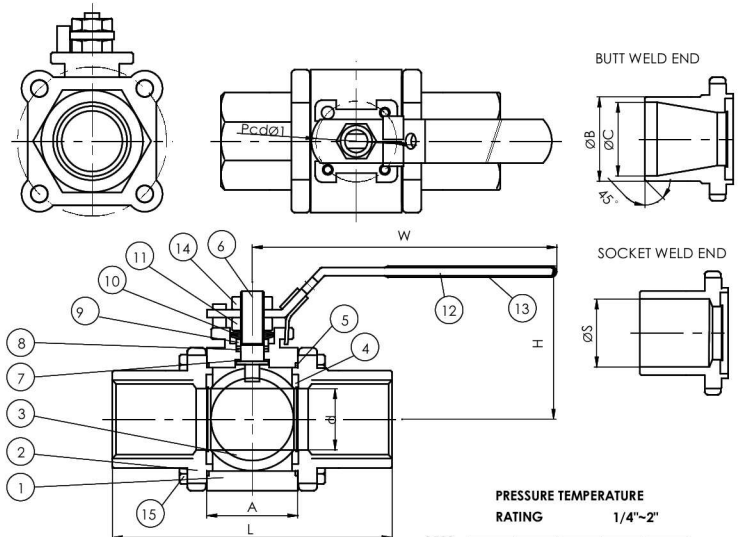
*3000 PSI up to 3/4", Lug body

*Screwed end, butt weld & socket weld end.

*Mounting Pad ISO 5211

OPTION: Locking device

ITEM	PARTS	QTY	MATERIALS	
1	BODY	1	ASTM-A351-CF8M	ASTM-A216-WCB
2	CAP	1	ASTM-A351-CF8M	ASTM-A216-WCB
3	BALL	1	ASTM-A351-CF8M	ASTM-A351-CF8
4	BALL SEATS	2	PTFE	PTFE
5	JOINT GASKET	1	PTFE	PTFE
6	STEM	1	AISI 316	AISI 304
7	THRUST WASHER	1	PTFE	PTFE
8	STEM PACKING	2	PTFE	PTFE
9	STEM BUSHING	1	AISI 304	AISI 304
10	BELLEVILLE WASHER	2	AISI 304	AISI 304
11	STEM NUT	1	AISI 304	AISI 304
12	HANDLE	1	AISI 304	AISI 304
13	PLASTIC COVER	1	PLASTIC	PLASTIC
14	HANDLE NUT	1	AISI 304	AISI 304
15	BODY BOLT	8	AISI 304	AISI 304



DIMENSIONS										UNIT:mm	
NOMINAL SIZE	A	ØB	ØC	d	S	H	L	Pcdø1	w	TORQUE kgf-cm	CV FACTOR
1/4"	20.8	18	12	8	14.1	49	66.2	36	116	40	4.5
3/8"	20.8	18	14	11.5	17.6	49	66.2	36	116	40	6.6
1/2"	20.8	22	17.1	12.7	21.7	49	66.2	36	116	40	7.9
3/4"	24.8	27	22.5	15	27.2	53	71.5	36	116	60	11.2
1"	32	33.5	28	20	33.9	63	96.8	42	150	78	21
1-1/4"	41.4	42	33.5	25.4	42.6	67	108.4	42	150	110	34
1-1/2"	48.5	48	43	32	48.7	77	116.5	50	181	155	57
2"	56.5	60	53	38	61.1	85	128.5	50	181	220	80