

# FLANGED END 1-PIECE WAFER TYPE FULL PORT BALL VALVE



## V-1FW TYPE

SIZE: 1/2"~6"



### STAINLESS STEEL

**AISI-316** (EN10213-4 1.4408) (ASTM-A351-CF8M)

**AISI-304** (EN10213-4 1.4308) (ASTM-A351-CF8)

### CARBON STEEL

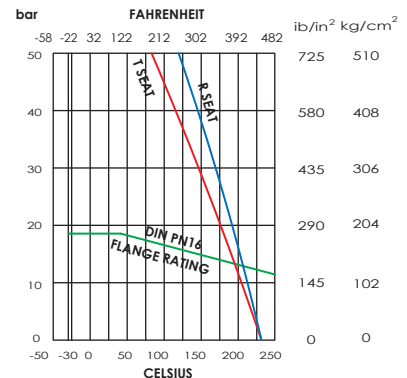
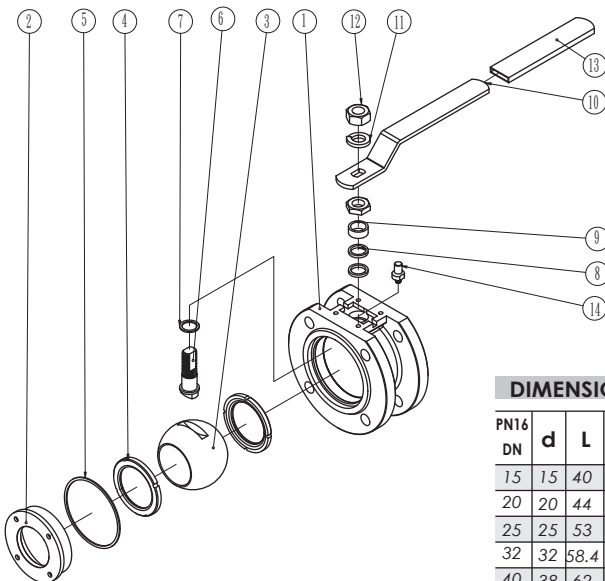
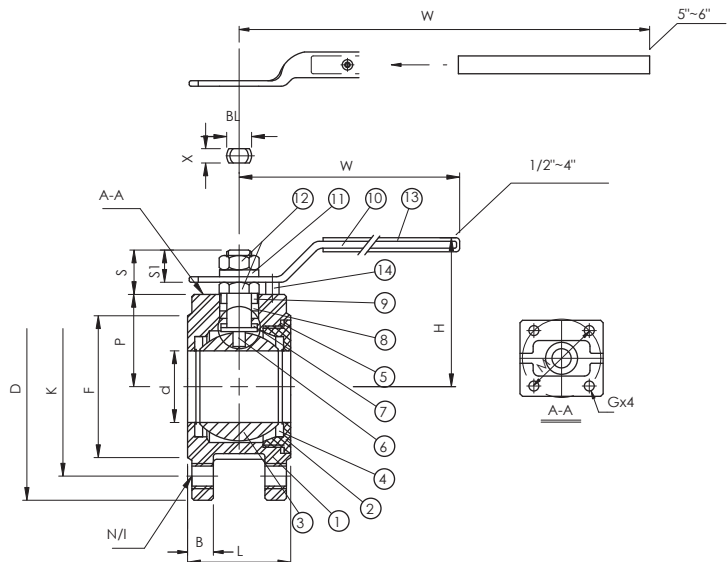
**S-20C** (EN10213-2 1.0619) (ASTM-A216-WCB)

### FEATURES:

- \*Flange: PN16
- \*Mounting pad for ISO 5211
- \*Anti-static device, fire safe design
- \*Blow-out proof stem, lever operated
- \*Full port, solid ball

**OPTION: Mounting Pad**  
**ANSI Class 150L**  
**Locking device**

ITEM	PARTS	Q.TY	MATERIALS	
1	BODY	1	ASTM-A351-CF8M	ASTM-A216-WCB
2	INSERT	1	ASTM-A351-CF8M	ASTM-A216-WCB
3	BALL	1	ASTM-A351-CF8M	ASTM-A351-CF8
4	BALL SEAT	2	PTFE	PTFE
5	JOINT GASKET	1	PTFE	PTFE
6	STEM	1	AISI 316	AISI 304
7	THRUST WASHER	1	PTFE	PTFE
8	STEM PACKING	2	PTFE	PTFE
9	HIGH WASHER	1	AISI 304	AISI 304
10	HANDLE	1	AISI 304	AISI 304
11	SPRING WASHER	1	AISI 304	AISI 304
12	STEM NUT	2	AISI 304	AISI 304
13	PLASTIC COVER	1	PLASTIC	PLASTIC
14	STOP	1	AISI 304	AISI 304



### DIMENSIONS

UNIT:mm

PN16 DN	d	L	D	K	N/I	B	F	P	S	S1	X	BL	ISO 5211 G	H	W	Cv FACTOR	TORQUE kgf-cm	kg
15	15	40	95	65	4-M12x1.75	14	45	34.5	17	10.5	6.5	10	F03	63	125	10	58	1.47
20	20	44	105	75	4-M12x1.75	14	58	38.5	17	10.5	6.5	10	F03	68	125	25	80	1.70
25	25	53	115	85	4-M12x1.75	14.5	68	44.6	24	16.5	8.7	14	F04	81	160	35	108	2.98
32	32	58.4	135	100	4-M16x2.0	15	78	51	24	16.5	8.7	14	F04	87	160	46	150	3.60
40	38	62	145	110	4-M16x2.0	16.5	88	55	29	21	10	16	F05	98	200	80	200	4.00
50	50	72	155	125	4-M16x2.0	17.5	102	63	29	21	10	16	F05	105	200	110	300	5.35
65	65	94	185	145	4-M16x2.0	18	122	73.5	36	26	12	20	F07	121	250	310	515	9.20
80	76	118	200	160	8-M16x2.0	19.5	138	94	36	26	12	20	F07	153	285	350	810	13.50
100	96	140	220	180	8-M16x2.0	19.5	158	105.5	36	26	12	20	F07	164	338	720	1130	19.34