

V-1 TYPE

SIZE: 1/4" ~ 2"



STAINLESS STEEL

AISI-316 (EN10213-4 1.4408) (ASTM-A351-CF8M)

AISI-304 (EN10213-4 1.4308) (ASTM-A351-CF8)

FEATURES:

*Pipe thread in accordance with ANSI B2.1, BS 21 1973, DIN 259/2999, ISO 228

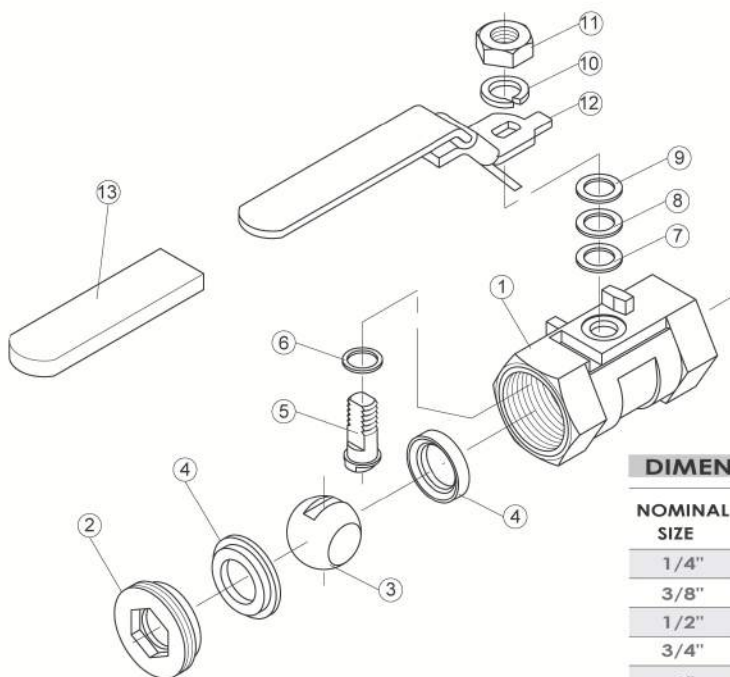
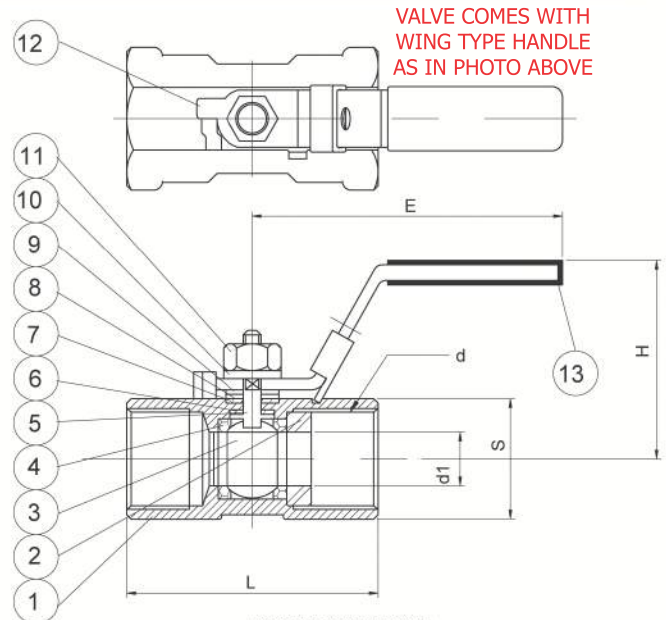
*Blow-out proof stem/Reduce bore

*Investment casting body and inscrewed

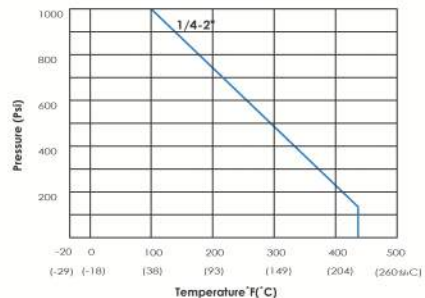
*800 PSI (55 BAR) W.O.G./1000 PSI (69 BAR) W.O.G.

OPTION: Locking device
Oval Handle
Wing Handle

NO	NAME OF PARTS	MATERIALS
1	BODY	316.WCB
2	INSERT	316.WCB
3	BALL	SUS 316
4	SEAT	PTFE
5	STEM	SUS 316
6	THRUST WASHER	PTFE
7	STEM PASHER	PTFE
8	GLAKND WASHER	SUS 304
9	GLAKND WASHER	SUS 304
10	SPRING WASHER	SUS 304
11	NUT	SUS 304
12	HANDLE WING TYPE	SUS 304
13	HANDLE SLEEVE	VINYL GRIP



PRESSURE TEMPERATURE RATINGS



DIMENSIONS

UNIT:mm

NOMINAL SIZE	d	d1	L	H	E	S	Cv FACTOR	TORQUE kgf-cm	KG
1/4"	RC 1/4	5	39	36.5	69	17	3.8	12	0.070
3/8"	RC 3/8	7.2	44	37.5	79	21	4.0	12	0.102
1/2"	RC 1/2	9.2	56.5	40	110	25	4.5	13	0.166
3/4"	RC 3/4	12.5	59	45.3	108	31.5	9.0	20	0.247
1"	RC 1	15	71	48	112	38	16.0	38	0.412
1-1/4"	RC 1-1/4	20	78	53	112	48	24.0	50	0.672
1-1/2"	RC 1-1/2	25	83	60.5	157	53	37.0	72	0.838
2"	2	32	100	67.5	155.5	64	68.0	90	1.384