

SPECIFICATION

Class 125 flanges and drilling in accordance with ANSI B16.1.

BST 'D' and BST 'F' flange dimensions and drilling in accordance with BS 10.

Body } High Duty Cast Iron (Semi-Steel),
 Plug } BS 1452 Gr. 14.
 Cover }

Gland } Carbon Steel
 Bolting }

Flanges drilled unless otherwise stated on order.

Most flanged valves on this page can be supplied with flanges drilled to DIN ND10 or BS 4504 PN10.

Tests: Body .. . } 250 lbf/in² Hydraulic applied
 Seat } 250 lbf/in² inside port

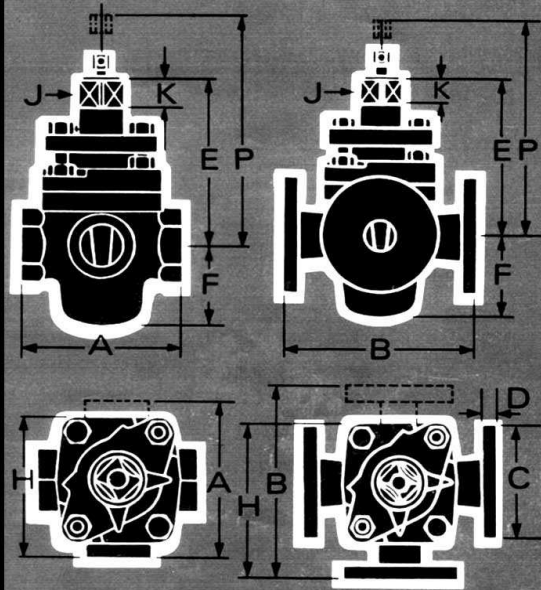
Maximum working pressure .. . } 150 lbf/in² (10 bar).
 (100 lbf/in² (7 bar) for valves flanged BST 'D').

STOP ARRANGEMENTS

Threeway L Port valves are normally supplied without stops but can be fitted with 90° stops to give positions A and B as shown overleaf.

Threeway T Port valves are normally supplied without stops but can be fitted with stops to give any combinations of adjacent flow positions.

All fourway valves are supplied with 90° rotational stops.



Flanged Valves	BST 'D'	BST 'F'	Class 125	Sizes
3-way L Port	ML 11	ML 11F	ML 13	½"-3"
3-way T Port	MT 11	MT 11F	MT 13	½"-3"
4-way	MU 11	MU 11F	MU 13	1½", 2", 3"
3-way L Port	MLV 11	MLV 11F	MLV 13	4"
3-way T Port	MTV 11	MTV 11F	MTV 13	4"
4-way	MUV 11	MUV 11F	MUV 13	4"

Valve Sizes		½"	¾"	1"	1½"	1½"	2"	2½"	3"	4"	
A	*End to end—Screwed valves ..	5" 127 mm	5" 127 mm	5¼" 133 mm		6⅞" 175 mm	7¾" 197 mm				
B	*Face to face—Flanged valves ..	6" 152 mm	6" 152 mm	6½" 165 mm	8" 203 mm	8¾" 222 mm	9½" 241 mm	10½" 267 mm	12" 305 mm	14" 356 mm	
C	Flange diameter	BST 'D' ..	3¾"	4"	4½"	4¾"	5¼"	6"	6½"	7¼"	8½"
		BST 'F' ..	3¾"	4"	4¾"	5¼"	5½"	6½"	7¼"	8"	9"
		Class 125 ..	3½"	3⅞"	4¼"	4⅝"	5"	6"	7"	7½"	9"
D	Flange thickness	BST 'D' ..	½"	½"	½"	⅝"	⅝"	¾"	¾"	¾"	⅞"
		BST 'F' & Class 125	½"	½"	½"	⅝"	⅝"	¾"	¾"	¾"	⅞"
E	Centre line to top of plug ..	5⅞" 149 mm	5⅞" 149 mm	6⅞" 175 mm	6⅞" 175 mm	7⅞" 200 mm	8⅞" 225 mm	9⅞" 250 mm	10⅞" 275 mm	11⅞" 300 mm	
F	Centre line to bottom of body ..	1⅞" 50 mm	1⅞" 50 mm	2⅞" 60 mm	2⅞" 65 mm	3" 76 mm	3⅝" 92 mm	4⅞" 108 mm	5⅞" 137 mm	5⅞" 148 mm	
H	Max. width of body (Screwed Threeway only) ..	4⅞" 110 mm	4⅞" 110 mm	4½" 114 mm		6" 152 mm	6⅝" 168 mm				
	Max. width of body (Flanged Threeway only) ..	4⅞" 120 mm	4⅞" 120 mm	5⅞" 130 mm	6⅞" 156 mm	6⅞" 175 mm	7⅞" 191 mm	8⅞" 208 mm	10⅞" 262 mm	12⅞" 308 mm	
J	Size of plug square ..	⅞"	⅞"	1⅞"	1⅞"	1¼"	1½"	1⅞"	1⅞"	2"	
K	Depth of plug square ..	⅞"	⅞"	1"	1"	1⅞"	1⅞"	1⅞"	1⅞"	1⅞"	
P	Clearance to remove lubricant screw ..	7⅞" 192 mm	7⅞" 192 mm	8⅞" 211 mm	9⅞" 230 mm	10⅞" 265 mm	11⅞" 291 mm	13⅞" 340 mm	13⅞" 348 mm	15⅞" 402 mm	
	Wrench number ..	3H	3H	4H	4H	5H	6H	7H	8H	10H	
	Wrench length from centre line ..	9"	9"	13"	13"	15"	18"	22"	28"	40"	
	Actuator number ..	P100	P100	P100	P100	P100	P480	P480	P480	P1700	
	Lubricant stick size ..	A	A	B	B	C	C	D	D	E	
	Weight (approx.) kg — Screwed Threeway ..	4.1	4.1	5.5		13	16				
	Weight (approx.) kg — Screwed Fourway ..	4.5	4.5	6.4							
	Weight (approx.) kg — Flanged Threeway ..	5.9	5.9	8.6	12	18	24	30	50	73	
	Weight (approx.) kg — Flanged Fourway ..					20	26		52	84	