

Klinger AB12 Water Gauge Mounts

...Sealing with Security



Quality
Endorsed
Company
ISO 9002 & QS 9000
Lic QS0048
Standards Australia

Index

AB12 Water Gauge Mounts



3. *Overview - Specs*

4. *Sleeve packed water gauge cocks*

5. *AB12 Spares & Part Numbers*

6. *Replacement glass, protector sets*

7. *AB12 Spares*

8. *AB12 Spares*

9. *Copper Washer Kit, Service Kit*

10. *Overhaul Kits*

11. *Maintenance Instructions*

...Sealing with Security

AB12 Water Gauge Mount

Overview

Material:

Bronze

Types:

Flanged or Screwed –

Standard undrilled flanged or 1/2" BSP & 3/4" BSP (in either left or right hand)



Max. Pressure:

Glass length 0-500mm (17 bar)

Glass length 500-1000mm (14 bar)

Glass length 1000-1500mm (10 bar)



Glass Tube:

3/4" (19mm) standard (cut to length- less 45mm from vessel centres for ideal length)

Also available 1/2" (12.7mm) & 5/8" (16mm)



Consumables:

Rubber cones, AB12 graphite packing sleeves, glass tube, copper washers

Spares:

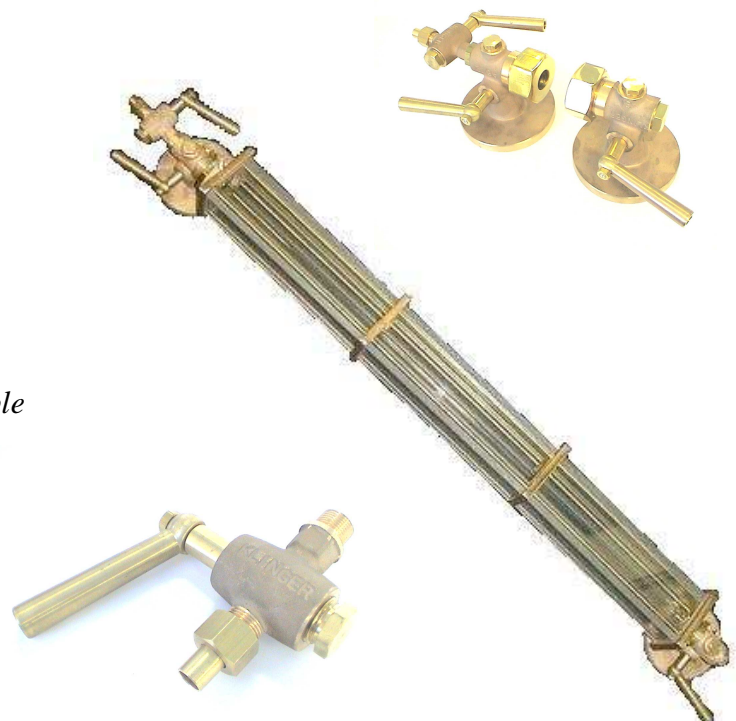
Refer spare parts list & drg nos

Overhaul & Service Kits:

AB12 Top & Bottom Overhaul Kit & Drain Cock Overhaul Kit, Copper Washer Kit & Service Kit

Protector Set:

Polycarbonate or Toughened Glass available (please specify centre distance)



AB12 Water Gauge Mount

Sleeve-packed water gauge cocks

AB12 Bronze Klinger Sleeve-Packed Shut off Cocks

These are standard pattern Klinger Gauge shut off mounts for boilers operating up to 260 PSI (1800 kpa) saturated steam and are available in a cast finish with the following standard vessel connections.

Flanged 114 x 15mm undrilled F/F

AB12 BR Shut off mount with flanged connections; R/H or L/H. With this unit safety shut off balls are fitted to the top and bottom gauge mount assemblies. In the top mount assembly the safety shut off ball is located at the back of the flanges and can be removed or examined by unscrewing the ball retainer plug (P/No 28). The safety ball in the bottom gauge assembly is located in the stuffing box head and examination or removal of the safety ball can be performed by unscrewing the drain cock connecting bush (P/No 29).



Screwed 3/4" & 1/2" BSP Male (Locking nut available)

AB 12 BR Shut off mounts with screwed connections; R/H and L/H operation. Safety balls are located in the top and bottom mounts with a retaining spring (P/No 13) in the top mount.



Tubular glass type level gauge

AB12 Bronze Klinger Gauge shut off mounts can be fitted with a variety of level gauges with the most common being the tubular gauge glass type.

Tubular gauge glasses are available in 3/4", 5/8" and 1/2" outside diameter. Fitting of the various sizes of glass tubes is easily effected by simply fitting a gauge glass cone (P/No 10) of the corresponding size.

Klingerlastic rings can be supplied if required and are recommended for low pressure applications. **For sizing the glass tube length, use vessel centres less 45mm**

Gauge Glass Protectors

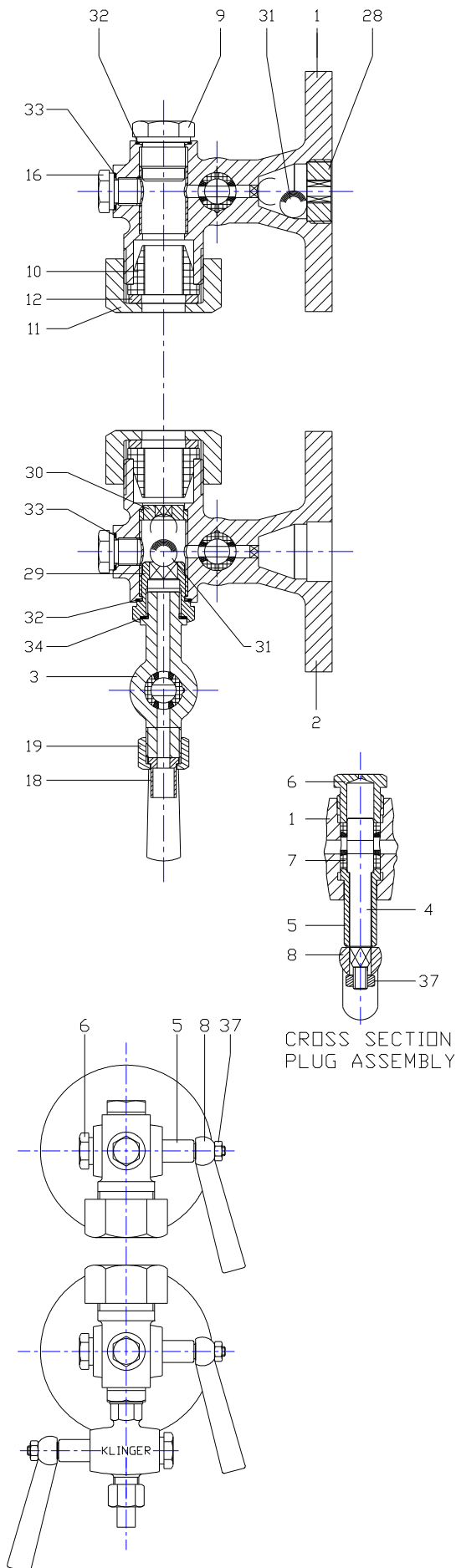
Three-pane glass protectors are available in armoured glass or Polycarbonate. When ordering gauge protectors please specify type required, vessel centres and type of Klinger gauge mount



Klinger Level Gauges

AB12 Water Gauge Mount

Spares & part numbers



Klinger Part No	Drg No	Description
-	1	Top Cock Body
-	2	Bottom Cock Body
500134	3	AB12 Drain Cock
400135	4	AB12 S/Steel spindle
400129	5	Brass Neck Bush
400126	6	Tightening Brass Nut
454020	7	AB12 Graphite Packing Sleeve
400130	8	Brass Handle
400136	9	Tube Cleaning Plug
684008	10	Rubber Cone
400216	11	Brass Gland Nut
400232	12	Brass Gland Ring
400156	16	Cleaning plug nut
400096	18	Tail Pipe
400097	19	Tail Pipe Nut
400210	28	Retaining Bush
400233	29	Drain Cock Bush
400209	31	Safety Ball
630022	32	Tube Cleaning gasket
	33	Cleaning plug gasket
	34	Drain cock gasket
Gaskets drg nos 32, 33 & 34 available together as copper washer gasket kit - refer part numbers above for ordering		

Klinger AB12 WGM

Replacement gauge glass, protector sets

Klinger Part No	Drg No	Description	Photo
528201	1	Right Hand Flanged Undrilled - includes drain cock	
528202	2	Left Hand Flanged Undrilled - includes drain cock	
528092N	1	Right Hand Screwed 1/2"BSP	
528093N	2	Left Hand Screwed 1/2" BSP	
528094N	1	Right Hand Screwed 3/4" BSP	
528095N	2	Left Hand Screwed 3/4" BSP	
3 PANE PROTECTOR SETS MADE TO ORDER AVAILABLE IN EITHER POLYCARBONATE OR TOUGHENED GLASS Specify vessel centres			
KGG19X217	GAUGE GLASS TUBE 3/4" 217MM LONG		
KGG19X226	GAUGE GLASS TUBE 3/4" 226MM LONG		
KGG19X241	GAUGE GLASS TUBE 3/4" 9.1/2" LONG		
KGG19X254	GAUGE GLASS TUBE 3/4" 10" LONG		
KGG19X266	GAUGE GLASS TUBE 3/4" 10.5" LONG		
KGG19X272	GAUGE GLASS 3/4" OD X 272MM LONG		
KGG19X300	GAUGE GLASS 3/4" OD X 300MM LONG		
KGG19X305	GAUGE GLASS TUBE 3/4" 12" LONG		<p style="text-align: center;">Borosilicate gauge glass standard lengths available</p> <p style="text-align: center;">also available cut to length glass in 3/4", 5/8" & 1/2" OD</p>
KGG19X312	GAUGE GLASS TUBE 3/4" 312MM LONG		
KGG19X317	GAUGE GLASS TUBE 3/4" 12.1/2" LONG		
KGG19X330	GAUGE GLASS TUBE 3/4" 13" LONG		
KGG19X336	GAUGE GLASS TUBE 3/4" 336MM LONG		
KGG19X380	GAUGE GLASS 3/4" X 380MM LONG		
KGG19X400	GAUGE GLASS TUBE 3/4" 400MM LONG		

AB12 Spares

Klinger Part No	Drg No	Description	Notes	Photo
630020	-	Klinger AB12 Overhaul Kit	For top & bottom mounts - used for either screwed or flanged	
630024NZ	-	Klinger AB12 Service Kit	Kit includes copper washers, safety ball, packing sleeves & rubber cones	
500134	3	AB12 Drain Cock	Material Bronze	
400135	4	AB12 S/Steel spindle	Material 316 Stainless Steel	
400129	5	Brass Neck Bush	Material Brass	
400126	6	Tightening Brass Nut	Material Brass	
454020	7	AB12 Graphite Packing Sleeve	Material Graphite	
400130	8	Brass Handle	Material Brass	
400136	9	Tube Cleaning Plug	Material Brass	

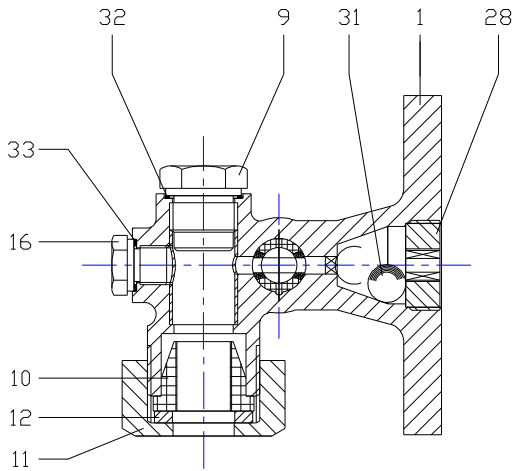
AB12 Spares

Klinger Part No	Drg No	Description	Notes	Photo
684008	10	Rubber Cone	Material EPDM composite	
400216	11	Brass Gland Nut	Material Brass	
400232	12	Brass Gland Ring	Material Brass	
	13	Spring	For use in screwed gauge mounts	
400156	16	Cleaning plug nut	Material Brass	
400210	28	Retaining Bush	Material Brass	
400233	29	Drain Cock Bush	Material Brass	
400209	31	Safety Ball	Material Bronze	
630022	32 33 34	Tube Cleaning gasket Cleaning plug gasket Drain cock gasket	Refer copper washer kit details. Note right hand (1.2mm) & left hand (0.9mm) washers are different thickness	

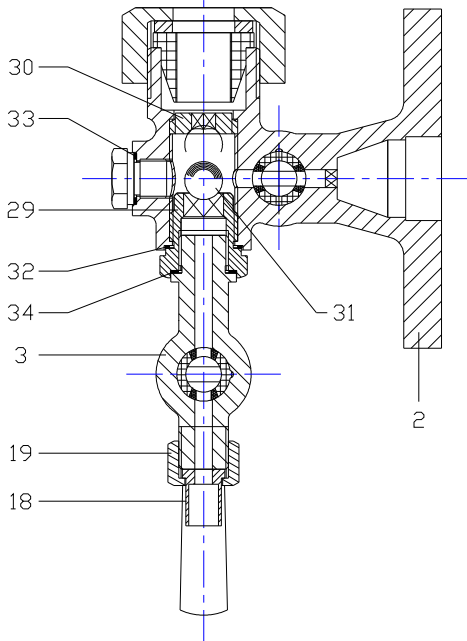
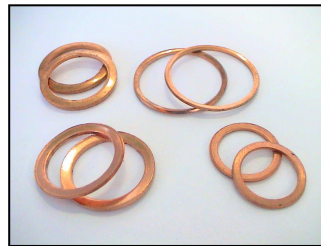
AB12 Gasket & Service Kits

Copper Washer Gasket Kit Klinger Part No 630022

Includes:



Klinger Part No	Drg No	Kit Qty	Description
630022	32	2	Tube Cleaning gasket
	33	2	Cleaning plug gasket
	34	2	Drain cock gasket (left hand - 0.9mm thk)
	34	2	Drain cock gasket (right hand - 1.2mm thk)



AB12 Service Kit Klinger Part No 630024NZ

Includes:

Klinger Part No	Drg No	Kit Qty	Description
454020	7	2	AB12 Graphite Packing Sleeve
684008	10	2	Rubber Cone
400209	31	2	Safety Ball
-	32	2	Tube Cleaning gasket
-	33	2	Cleaning plug gasket

Overhaul Kits

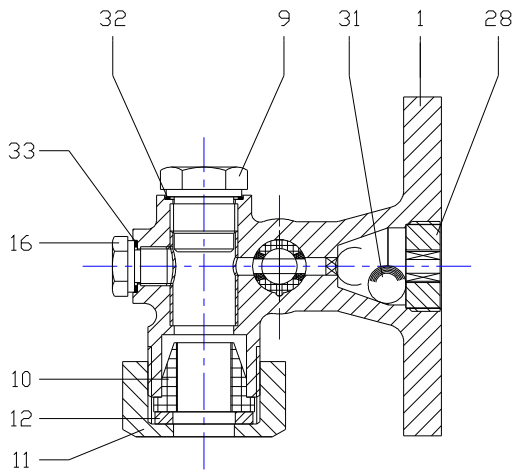
WGM AB12 Top & Bottom Kit

Klinger

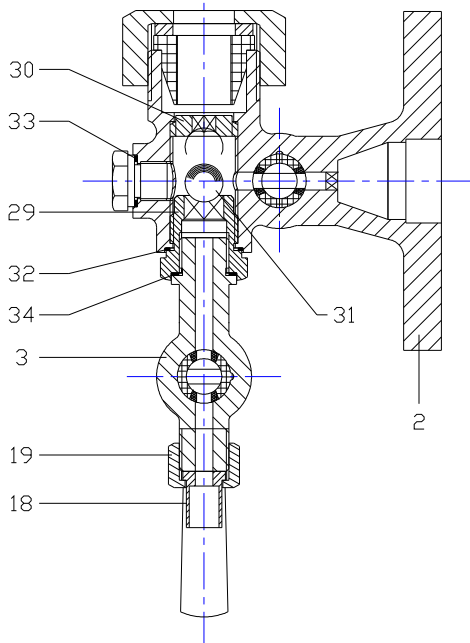
Part No 630020



Includes:



Klinger Part No	Drg No	Kit Qty	Description
-	1	-	Top Cock Body
400135	4	2	AB12 S/Steel spindle
454020	7	2	AB12 Graphite Packing Sleeve
-	13	1	Spring (screwed only)
-	17	1	Top seat ring (screwed only)
400209	31	1	Safety Ball
-	32	2	Tube Cleaning gasket
-	33	2	Cleaning plug gasket



WGM AB12 Drain Cock Kit

Klinger Part No 630021

Includes:

Klinger Part No	Drg No	Kit Qty	Description
400135	4	1	AB12 S/Steel spindle
454020	7	1	AB12 Graphite Packing Sleeve
-	34	2	Drain cock gasket
-	-	1	Klingerflon Tape 12mm x 10m

Maintenance Instructions

Klinger AB12 WGM

1. **Commissioning** – During the commissioning period the spindle packing sleeve and the sealing joints could settle and it is essential therefore to follow up all clamping nuts to maintain the leak-tight seal. Ensure gauges/valves are brought into high temperature service gradually.
2. **Maintenance Instructions**
 - 2.1 Any leaks which appear during service should immediately be stopped by following up at the appropriate point. (ie. bonnet nuts, union nuts and spindle gland).
 - 2.2 **Repacking the Spindle Gland**
 - 2.2.1 With valves in the open position drain vessel to a level below that of the bottom connection.
 - 2.2.2 Relieve vessel and gauge of internal pressure.
 - 2.2.3 Close valve fully.
 - 2.2.4 Remove adjusting nut opposite the handle.
 - 2.2.5 Undo nut connecting handle to spindle.
 - 2.2.6 Remove the old packing sleeve and spindle by pushing spindle through the stuffing box.
 - 2.2.7 Insert new packing sleeve and spindle in opposite direction to action 2.2.6. Reattach nuts. Tighten adjusting nut such that the handle is stiff to move as a rough guide.
 - 2.2.8 Follow gauge commissioning procedure to bring the gauge and valves back into service.
 - 2.3 **Safety Balls**
 - 2.3.1 It is very important that the safety balls be re-installed as per the drawing included in the kit.
 - 2.3.2 WGM with screwed connections are as per the drawing. The only difference for flanged WGM is the TOP MOUNT arrangement only. For this design the safety ball is installed in the flange cavity not the stuffing box as shown on the screwed connection drawing.
3. **Important**
 - 3.1 Use only original KLINGER replacement parts.
 - 3.2 If primary isolation valves are fitted it is not necessary to drain the vessel or relieve it of internal pressure. With WGM in the open position close isolating valves and relieve gauge and cocks of internal pressure. Then continue as for standard procedure.



IMPORTANT: Top Seat Ring PN17 has no chamfer.
Bottom Seat Ring PN 30 has a chamfer.
Ensure fitted according to drawing