

SIZE: 1/4"-2", 3600WOG/ PN 248
 SIZE: 2-1/2"-3", 3000WOG/ PN 205



ZIPSON'S 306D, 3-piece high performance ball valve , 3600 psi (designed according to Class 1500, stainless steel at 3600 psi and carbon steel at 3705 psi), with ISO direct mounting pad was designed for the high pressure industrial pipe line in full port product.

To compare the economic valve in the market, Zipson make valve structure & wall thickness totally follow ASME B16.34 standard. The exact structure make safe in the high performance application.

The standard seat material was settled on PEEK (450G, PEEK/ 450CA30, PEEK+30% Carbon), DELRIN is the other option for low temperature environment.

306D high performance are full bore from 1/4" to 2" (DN08-DN50). V-ball for ball valve type control valve are available for 15°, 60°, or 90° for different flow rate requirement.

306D high performance 3-piece ball valve can be with fire safe design with SS seat housing designed follow API607 Edition 4.

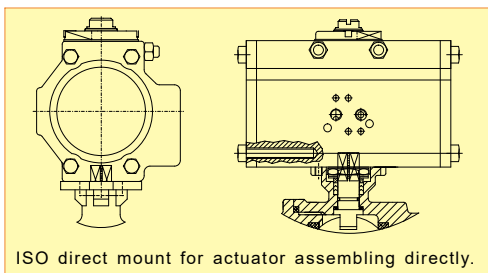
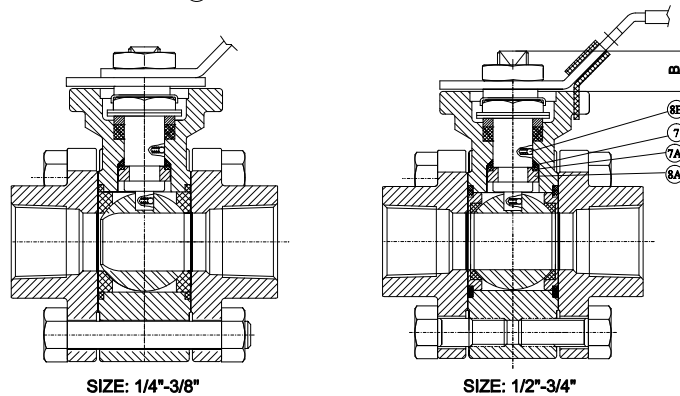
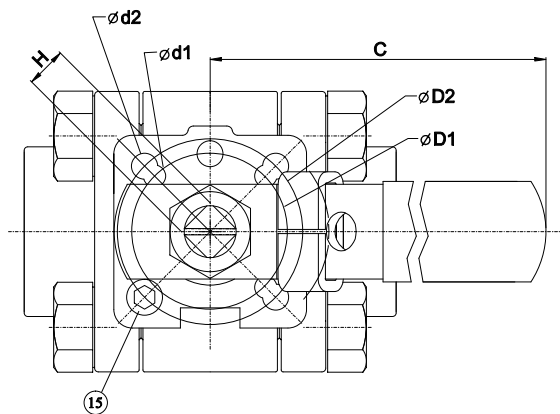
The standard bare stem type is well designed for mounting actuator directly with very low torque value. ZIPSON offer pneumatic/ electric actuator and limit switch box/ solenoid valve/ modulating controller....assembling without further charge.

SPECIFICATION

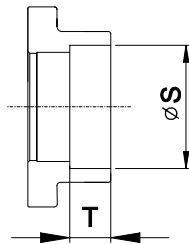
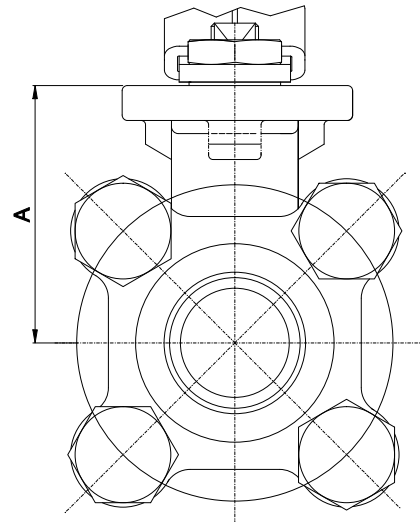
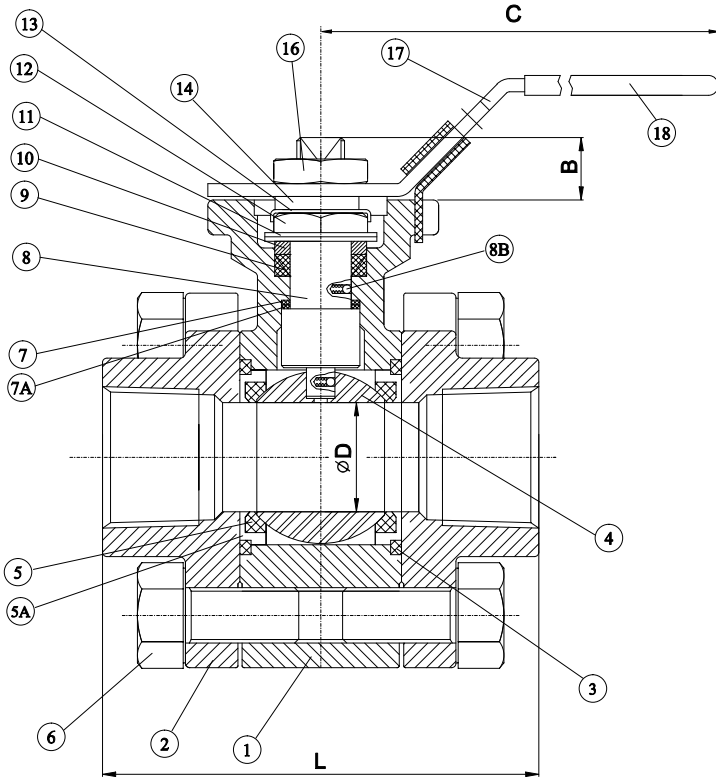
- * Body & end caps quality investment casting
- * Valve construction & wall thickness totally with ASME B16.34 standard
- * Full bore design
- * with ISO 5211 direct mounting pad
- * Adjustable stem packing
- * Available in stainless steel or carbon steel
- * Blow-out proof stem design
- * 100% air tested under water at 80-100 psi
- * Temperature range: see Pressure/Temperature table
- * with locking function
- * End type: threaded/ socket weld/ butt weld

OPTION

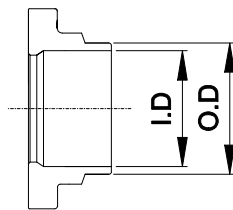
- * **FIRE SAFE: API607-6th Edition Certified**
- * Spring handle (dead man handle)
- * Oval handle
- * V-ball for control valve (ball valve type)
- * Automation application
- * Cryogenic type
- * PTFE/ PFA coating (40-70 um)
- * Special Alloy
 Hastalloy C 276/ Super duplex/ Alloy 20/ Monel 400



ISO direct mount for actuator assembling directly.



SOCKET WELD



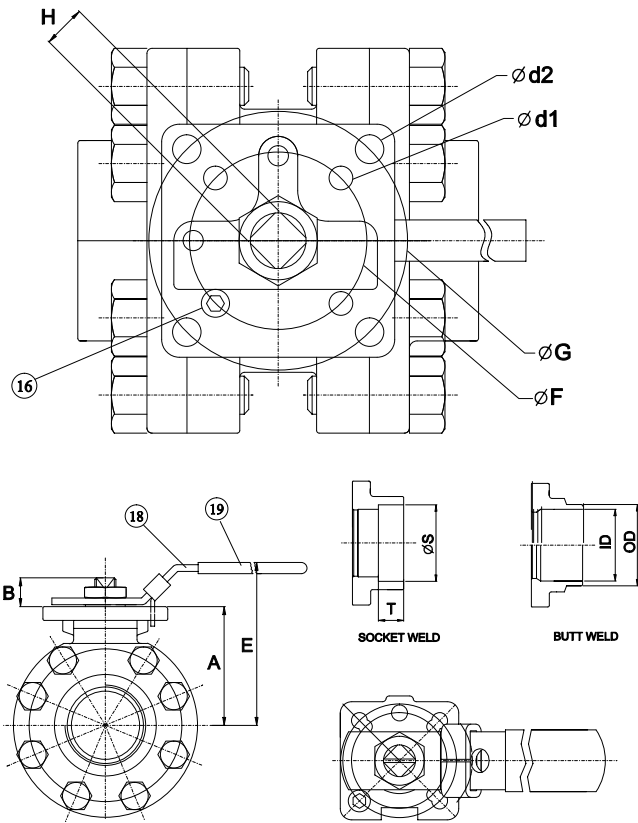
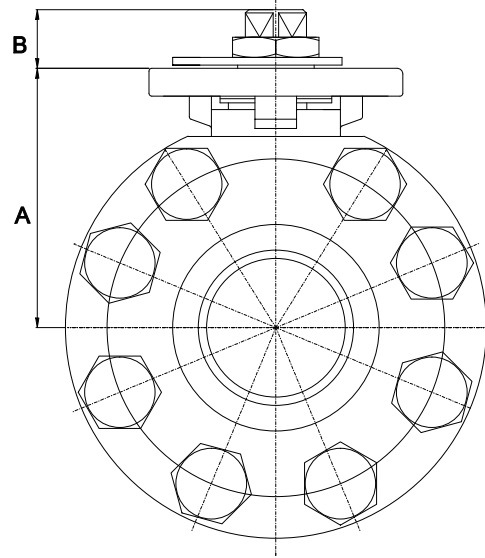
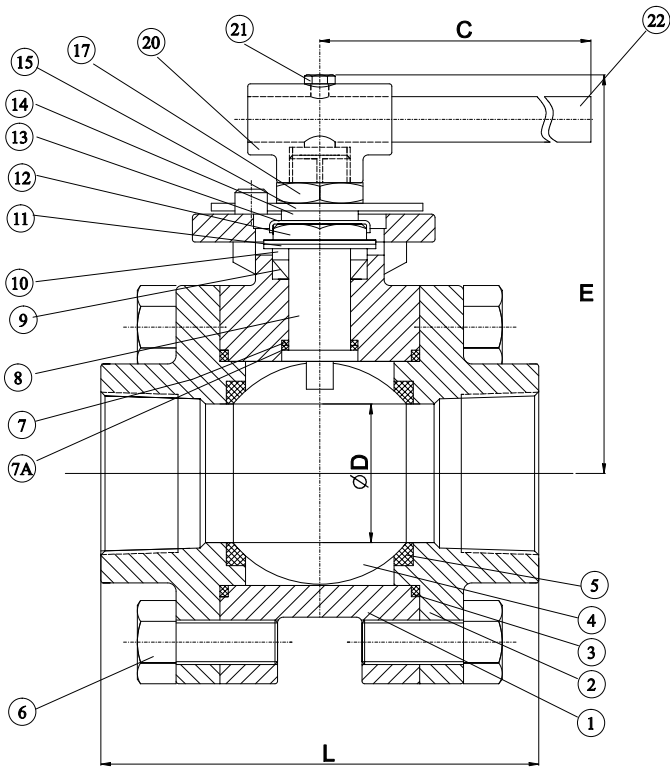
BUTT WELD

MATERIALS LIST (1/4" TO 1")

| ITEM | PART NAME | MATERIALS |
|------|-----------------|--------------|
| 1 | BODY | CF8M |
| 2 | END CAP | CF8M |
| 3 | GASKET | TFM |
| 4 | BALL | SS 316 |
| 5 | SEAT | PEEK/ DELRIN |
| 5A | SEAT HOUSING | SS 316 |
| 6 | BOLT | SS 304 |
| 7 | THRUST WASHER | TFM |
| 7A | THRUST WASHER | PEEK |
| 8 | STEM | SS 316 |
| 8A | HALF SPILT RING | SS 316 |
| 8B | ANTI-STATIC | SS 316 |
| 9 | STEM PACKING | TFM |
| 10 | GLAND WAHSER | SS 304 |
| 11 | DISK WAHSER | SS 301 |
| 12 | STEM NUT | SS 304 |
| 13 | NUT STOP | SS 304 |
| 14 | SPACE WASHER | SS 304 |
| 15 | STOP PIN | SS 304 |
| 16 | HANDLE NUT | SS 304 |
| 17 | HANDLE | SS 304 |
| 18 | SLEEVE | PLASTIC |

DIMENSIONS (mm) (1/4" TO 1")

| SIZE | A | B | C | D | D1 | D2 | d1 | d2 | H | L | SW | | BW(40#) | | BW(#80) | |
|------|----|-----|-----|----|----|----|-----|-----|----|------|------|------|---------|------|---------|------|
| | | | | | | | | | | | S | T | OD | ID | OD | ID |
| 1/4" | 46 | 9.5 | 160 | 11 | 36 | 42 | 6.0 | 7.0 | 9 | 66.5 | 14.1 | 11.2 | 14.0 | 9.2 | 14.0 | 7.5 |
| 3/8" | 46 | 9.5 | 160 | 11 | 36 | 42 | 6.0 | 7.0 | 9 | 66.5 | 17.5 | 11.2 | 17.5 | 12.5 | 17.5 | 10.7 |
| 1/2" | 48 | 9.5 | 160 | 15 | 36 | 42 | 6.0 | 7.0 | 9 | 70 | 21.8 | 12.7 | 21.3 | 15.9 | 21.3 | 13.8 |
| 3/4" | 53 | 12 | 190 | 20 | - | 50 | - | 7.2 | 11 | 92 | 27.1 | 14.3 | 26.7 | 20.6 | 26.7 | 18.9 |
| 1" | 59 | 12 | 190 | 25 | - | 50 | - | 7.2 | 11 | 105 | 33.8 | 15.9 | 33.3 | 26.6 | 33.3 | 24.3 |



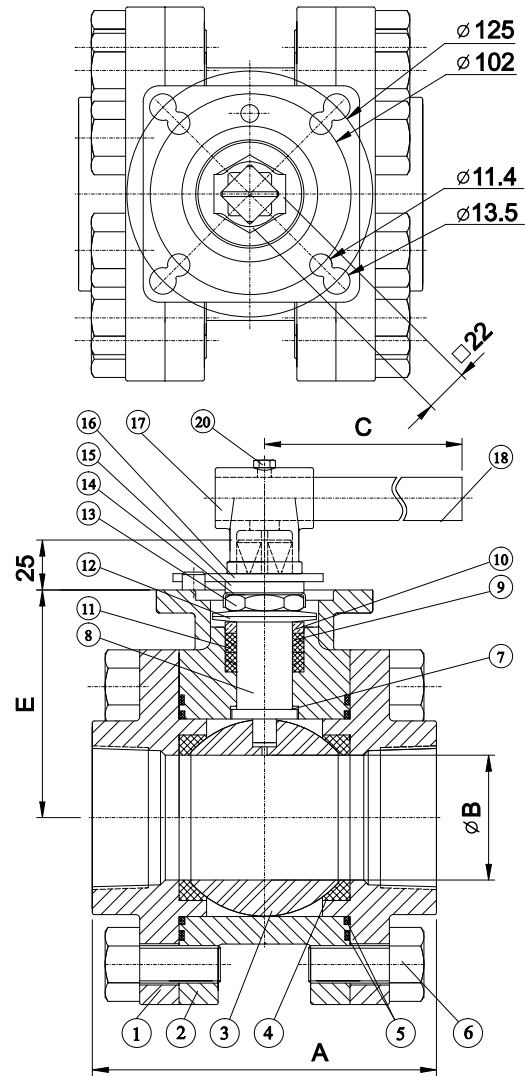
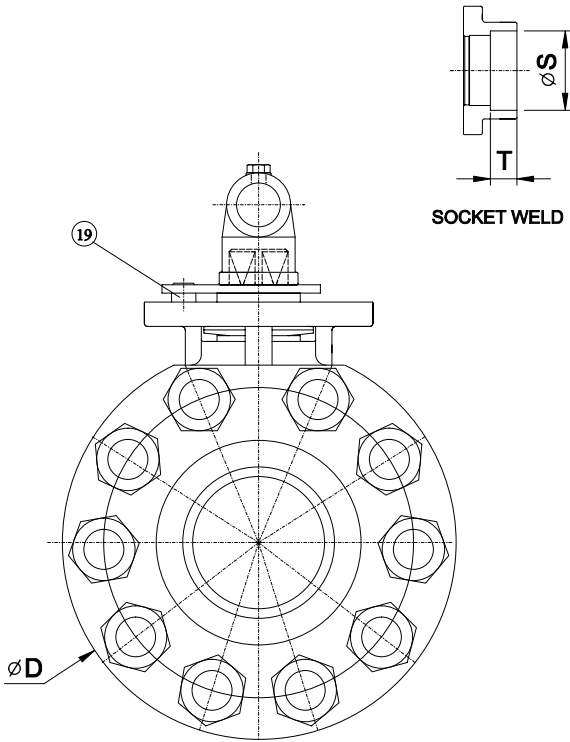
SIZE: 1-1/4" & 1-1/2"

MATERIALS LIST (1-1/2" TO 2")

| ITEM | PART NAME | MATERIALS |
|------|---------------|----------------|
| 1 | BODY | CF8M |
| 2 | END CAP | CF8M |
| 3 | GASKET | TFM |
| 4 | BALL | SS 316 |
| 5 | SEAT | PEEK/ DELRIN |
| 6 | BOLT | SS 304 |
| 7 | THRUST WASHER | TFM |
| 7A | THRUST WASHER | PEEK |
| 8 | STEM | SS 316/ 17-4PH |
| 9 | STEM PACKING | TFM |
| 10 | GLAND WAHSER | SS 304 |
| 11 | DISK WAHSER | SS 301 |
| 12 | GLAND NUT | SS 304 |
| 13 | NUT STOP | SS 304 |
| 14 | SPACE WASHER | SS 304 |
| 15 | STOP PLATE | SS 304 |
| 16 | STOP PIN | SS 304 |
| 17 | STEM NUT | SS 304 |
| 18 | HANDLE | SS 304 |
| 19 | SLEEVE | PLASTIC |
| 20 | LEVER HEAD | CF8 |
| 21 | SET BOLT | SS 304 |
| 22 | LEVER | STEEL PIPE |

DIMENSIONS (mm) (1-1/4" TO 2")

| SIZE | A | B | C | D | E | F | G | d1 | d2 | H | L | SW | | BW(40#) | | BW(#80) | |
|--------|----|----|-----|----|-----|----|-----|-----|------|----|-----|------|------|---------|------|---------|------|
| | | | | | | | | | | | | S | T | OD | ID | OD | ID |
| 1-1/4" | 74 | 16 | 245 | 32 | 110 | 50 | 70 | 7.2 | 9.2 | 14 | 114 | 42.5 | 17.5 | 42.2 | 35.1 | 42.5 | 32.5 |
| 1-1/2" | 80 | 16 | 245 | 38 | 116 | 50 | 70 | 7.2 | 9.2 | 14 | 128 | 48.6 | 18.3 | 48.5 | 40.5 | 48.5 | 37.8 |
| 2" | 96 | 20 | 350 | 50 | 144 | 70 | 102 | 9.2 | 11.4 | 17 | 158 | 61.1 | 21.3 | 60.5 | 52.4 | 60.5 | 48.9 |



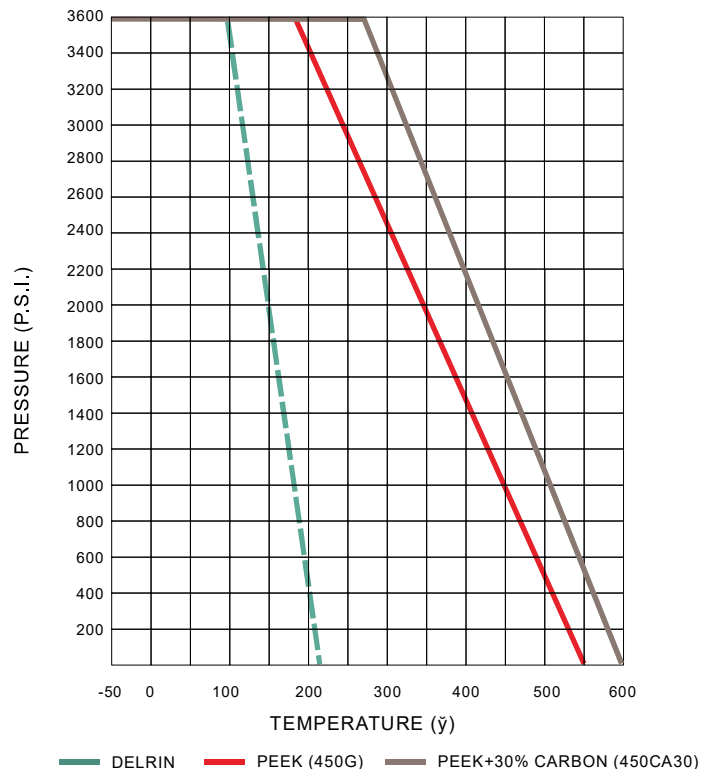
DIMENSIONS (mm) (2-1/2" TO 3")

| SIZE | A | B | C | D | E | F | SW | |
|--------|-----|------|-----|-----|-----|-----|------|------|
| | | | | | | | S | T |
| 2-1/2" | - | 63.5 | 400 | - | - | - | 73.9 | 22.2 |
| 3" | 196 | 78 | 520 | 200 | 126 | 165 | 89.9 | 25.4 |

MATERIALS LIST (2-1/2" TO 3")

| ITEM | PART NAME | MATERIALS |
|------|---------------|----------------|
| 1 | END CAP | CF8M |
| 2 | BODY | CF8M |
| 3 | BALL | SS 316 |
| 4 | SEAT | PEEK/ DELRIN |
| 5 | GASKET | TFM |
| 6 | BOLT | SS 304 |
| 7 | THRUST WASHER | PEEK |
| 8 | STEM | SS 316/ 17-4PH |
| 9 | STEM PACKING | TFM |
| 10 | GLAND WAHSER | SS 304 |
| 11 | DISK WAHSER | SS 301 |
| 12 | GLAND NUT | SS 304 |
| 13 | NUT STOP | SS 304 |
| 14 | SPACE WASHER | SS 304 |
| 15 | STOP PLATE | SS 304 |
| 16 | STEM NUT | SS 304 |
| 17 | LEVER HEAD | CF8 |
| 18 | LEVER | STEEL PIPE |
| 19 | STOP PIN | SS 304 |
| 20 | SET BOLT | SS 304 |

PRESSURE/ TEMPERATURE



OPTIONS ON 306D TYPE



- Manual valve with limit switch box (special bracket)